

New recommendations

| Date | Scrip | I-Direct Code | Action | Initiation Range | Target | Stoploss | Duration |
|-----------|------------------------------|---------------|--------|------------------|---------------|----------|----------|
| 12-Aug-24 | Nifty (Current Month Future) | NIFTY | Buy | 24250-24282 | 24316/24369.0 | 24214.00 | Intraday |
| 12-Aug-24 | Hindustan Unilever | HINLEV | Buy | 2734-2736 | 2766 | 2717.00 | Intraday |

Intraday Index recommendations are for current month futures. Positional recommendations are in cash segment

Open recommendations

| Date | Scrip | I-Direct Code | Action | Initiation Range | Target | Stoploss | Duration |
|-----------|-------|---------------|--------|------------------|--------|----------|----------|
| 07-Aug-24 | HPCL | HINPET | Buy | 389-397 | 426 | 376.00 | 30 Days |

August 12, 2024

Gladiator Stocks

| Scrip Name | Action |
|---------------------|--------|
| GAIL | Buy |
| JSW Energy | Buy |
| Bank of Maharashtra | Buy |

Duration: 3 Months

[Click here to know more...](#)



Open Recommendations
For Instant stock ideas:

[SUBSCRIBE](#) to mobile notification on ICICIdirect Mobile app...

Research Analysts

Dharmesh Shah
dharmesh.shah@icicisecurities.com

Nitin Kunte
nitin.kunte@icicisecurities.com

Ninad Tamhanekar, CMT
ninad.tamhanekar@icicisecurities.com

Vinayak Parmar
vinayak.parmar@icicisecurities.com

Technical Outlook

Week that was...

Equity benchmarks extended losses over second consecutive week led by global volatility amid concerns over liquidity. Nifty settled week at 24368, down 1.4%. Broader market performed in tandem with 1.3% and 2% cut, respectively. Sectorally, pharma, FMCG outshone while metal, PSU Banks underperform

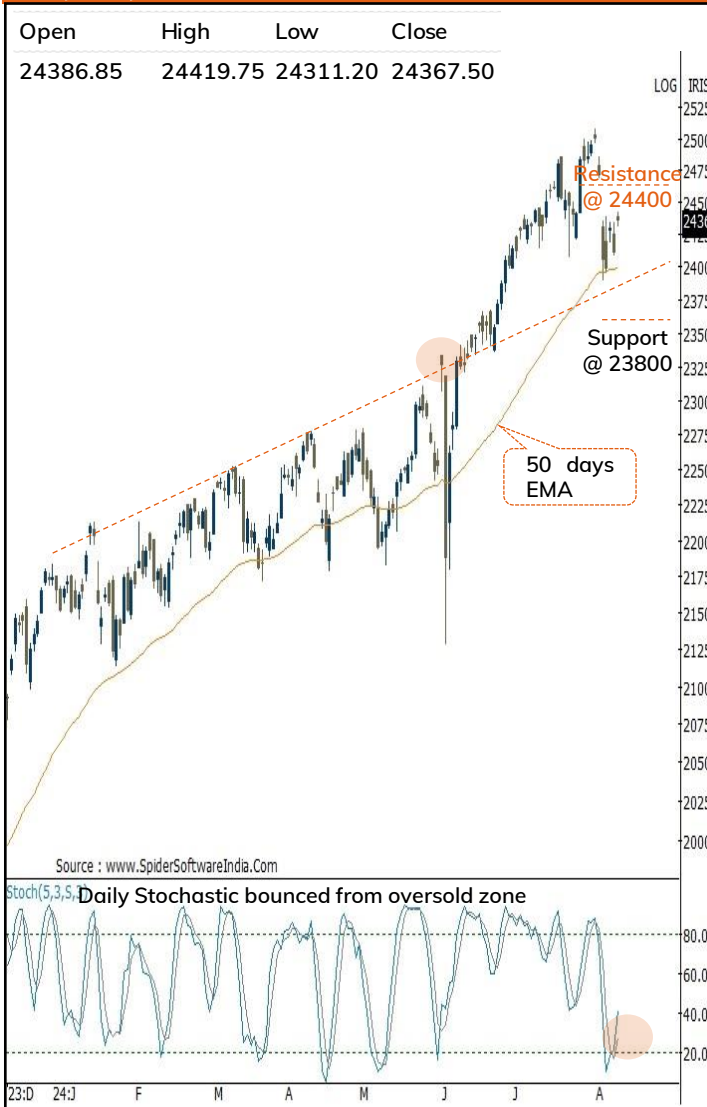
Technical Outlook:

- The index witnessed a gap down opening (24717-24302) and gradually consolidated in a narrow range of 24400-23900 throughout the week. The weekly price action resulted into doji like candle, indicating elevated volatility wherein supportive efforts that emerged from 50 days EMA
- In the upcoming truncated week, Nifty holding last week's low of 23800, despite volatility, will lead to consolidation in 24400-23800 range. Markets would await for direction from global markets coupled with India and US inflation data. Only a sustained follow through above Doji high of 24400 would lead to extended pullback towards 24700 in coming weeks. Traders should note that, intermediate correction is a part of structural up move which offers incremental buying opportunity
- A)Structurally, key point to highlight is that since Oct-2023 Nifty has not corrected for more than 2 weeks wherein intermediate correction have been limited to 5%. In the current scenario as well, we expect index to maintain same rhythm and stage a pullback as Nifty has already corrected 5% over past 2 weeks
- B)India VIX is key monitorable from risk perspective. VIX has cooled down significantly from resistance zone of 23 indicating lower risk perception in short term
- C) Globally, Nikkei and US indices have also bounced from oversold readings and expected to consolidate
- The formation of lower high-low on the weekly chart makes us revise support at 23800 as it is confluence of 20 days EMA coincided with last week's low

Source: Bloomberg, Spider, ICICI Direct Research

August 12, 2024

Nifty Daily Candlestick Chart



ICICI Securities Ltd. | Retail Equity Research

Domestic Indices

| Indices | Close | 1 Day Chg | % Chg |
|-----------------|----------|-----------|-------|
| SENSEX Index | 79705.91 | 819.69 | 1.04 |
| NIFTY Index | 24367.50 | 250.50 | 1.04 |
| Nifty Futures | 24401.50 | 264.95 | 1.10 |
| BSE500 Index | 36210.76 | 338.75 | 0.94 |
| Midcap Index | 57174.40 | 493.20 | 0.87 |
| Small cap Index | 18410.20 | 102.90 | 0.56 |
| GIFT Nifty | 24357.00 | -44.50 | 0.18 |

Nifty Technical Picture

| | Intraday | Short term |
|-------------|-------------|------------|
| Trend | ↔ | ↔ |
| Support | 24290-24220 | 23800 |
| Resistance | 24390-24460 | 24400 |
| 20 day EMA | | 24404 |
| 200 day EMA | | 22318 |

Nifty Future Intraday Reco.

| | |
|-------------|---------------|
| Action | Buy |
| Price Range | 24250-24282 |
| Target | 24316/24369.0 |
| Stoploss | 24214.00 |

Sectors in focus (Intraday) :

Positive: FMCG, Pharma, Oil & Gas

Neutral: Realty, Metal

Technical Outlook

Week that was:

Nifty Bank closed the week 1.7% or 866 points lower at 50484 post RBI policy on Thursday. NiftyPSU Bank index was down 3% for the week.

Technical Outlook:

- The Index started the week with gap down opening (50747-51088) and there after consolidated throughout the week in Monday candle range (50747-49660). In the process index held its rising 100 day ema around 49600 for fifth session amid oversold reading of 11 on daily stochastics. Price action formed is a Hammer like candle on weekly indicating supportive efforts at lower levels
- Going forward, key resistance is placed now at 51300 levels which is Mondays bearish gap area and value of down ward sloping trendline drawn from life highs. Further, a decisive breach of short term support of 49600 would indicate extended correction in coming sessions towards 48500 which is confluence of a) 61.8% retracement of post election rally and b) value of rising 200-day ema (48200)
- Price structure:** A) We observe that index is undergoing healthy retracement from overbought readings after 15% rally. Currently, index has retraced, post election, 21 session rally by 50% over 22 sessions, indicating corrective nature of decline and would lead into higher bottom formation
- B) Since beginning of 2024, after each 15% rally index has a tendency to correct around 8-9% from highs and in current context 7% decline is done. Hence going by historical rhythm further correction cannot be ruled out which would eventually result into a higher bottom formation around 200-day ema around 48500 levels

Source: Bloomberg, Spider, ICICI Direct Research

August 12, 2024

Bank Nifty Daily Candlestick Chart



BankNifty

| Indices | Close | Change | Change% |
|-----------|----------|--------|---------|
| BankNifty | 50484.50 | 327.80 | 0.65 |

BankNifty Technical Picture

| | Intraday | Short term |
|-------------|-------------|------------|
| Trend | ↔ | ↔ |
| Support | 50290-50120 | 49600 |
| Resistance | 50690-50900 | 51300 |
| 20 day EMA | | 51084 |
| 200 day EMA | | 48231 |

Bank Nifty Future Intraday Reco.

| | |
|-------------|-------------|
| Action | Buy |
| Price Range | 50200-50260 |
| Target | 50510 |
| Stoploss | 50090 |

Hindustan Unilever(HINLEV)

Duration: Intraday

| | | | | | | | |
|--------|-----|------------|-----------|--------|---------|-----------|---------|
| Action | Buy | Rec. Price | 2734-2736 | Target | 2766.00 | Stop loss | 2717.00 |
|--------|-----|------------|-----------|--------|---------|-----------|---------|

Daily Chart



Source: Spider Software, ICICI Direct Research

August 12, 2024

ICICI Securities Ltd. | Retail Equity Research

HPCL (HINPET)

Duration: 30 Days

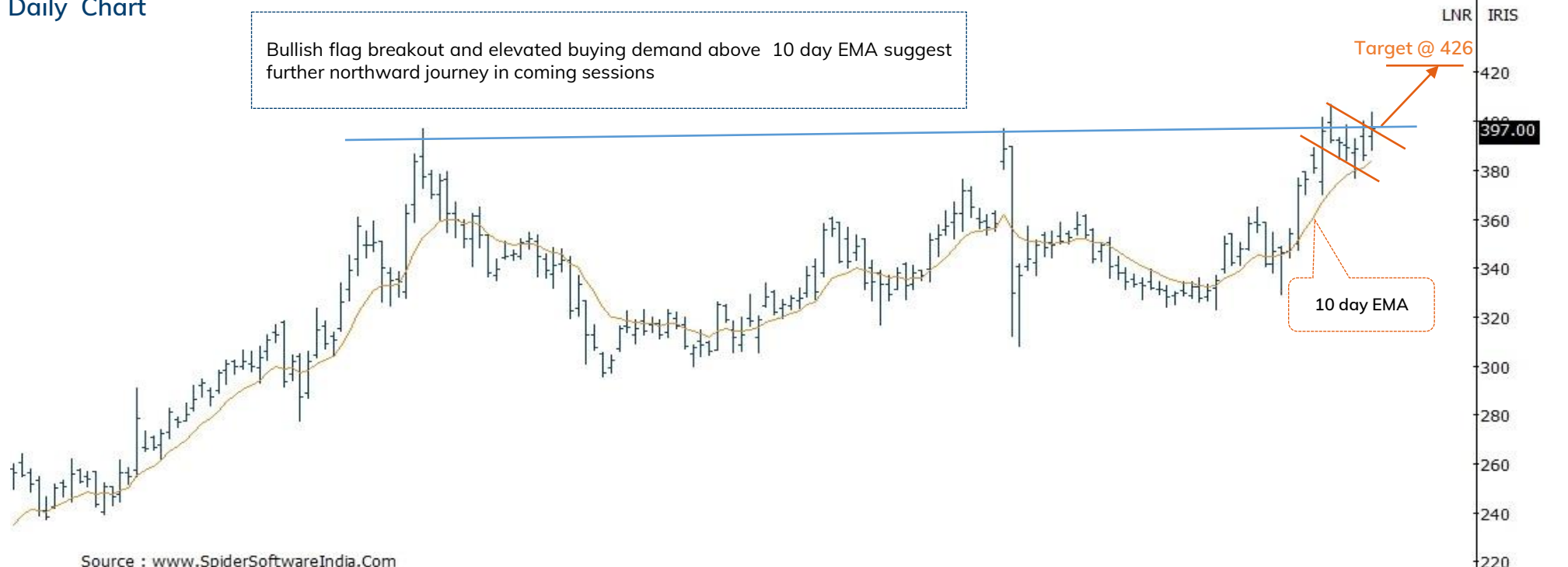


Recommended on I-click to gain on 7th Aug 2024 at 09:38

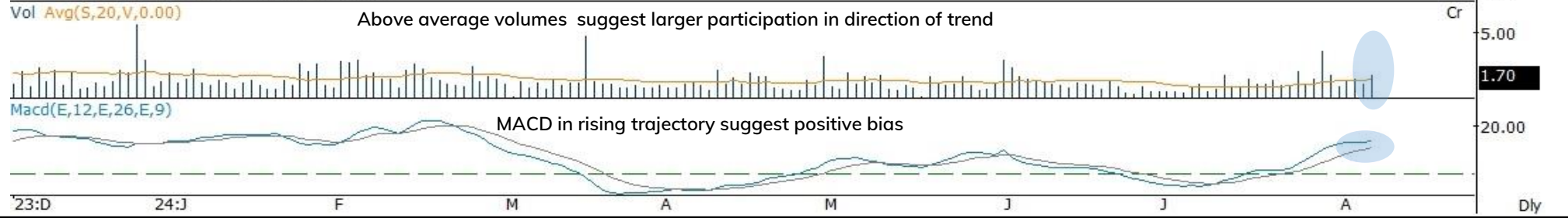
| | | | | | | | |
|------------|---------|--------|--------|-----------|--------|--------|----|
| Rec. Price | 389-397 | Target | 426.00 | Stop loss | 376.00 | Upside | 8% |
|------------|---------|--------|--------|-----------|--------|--------|----|

Daily Chart

Bullish flag breakout and elevated buying demand above 10 day EMA suggest further northward journey in coming sessions



Source : www.SpiderSoftwareIndia.Com

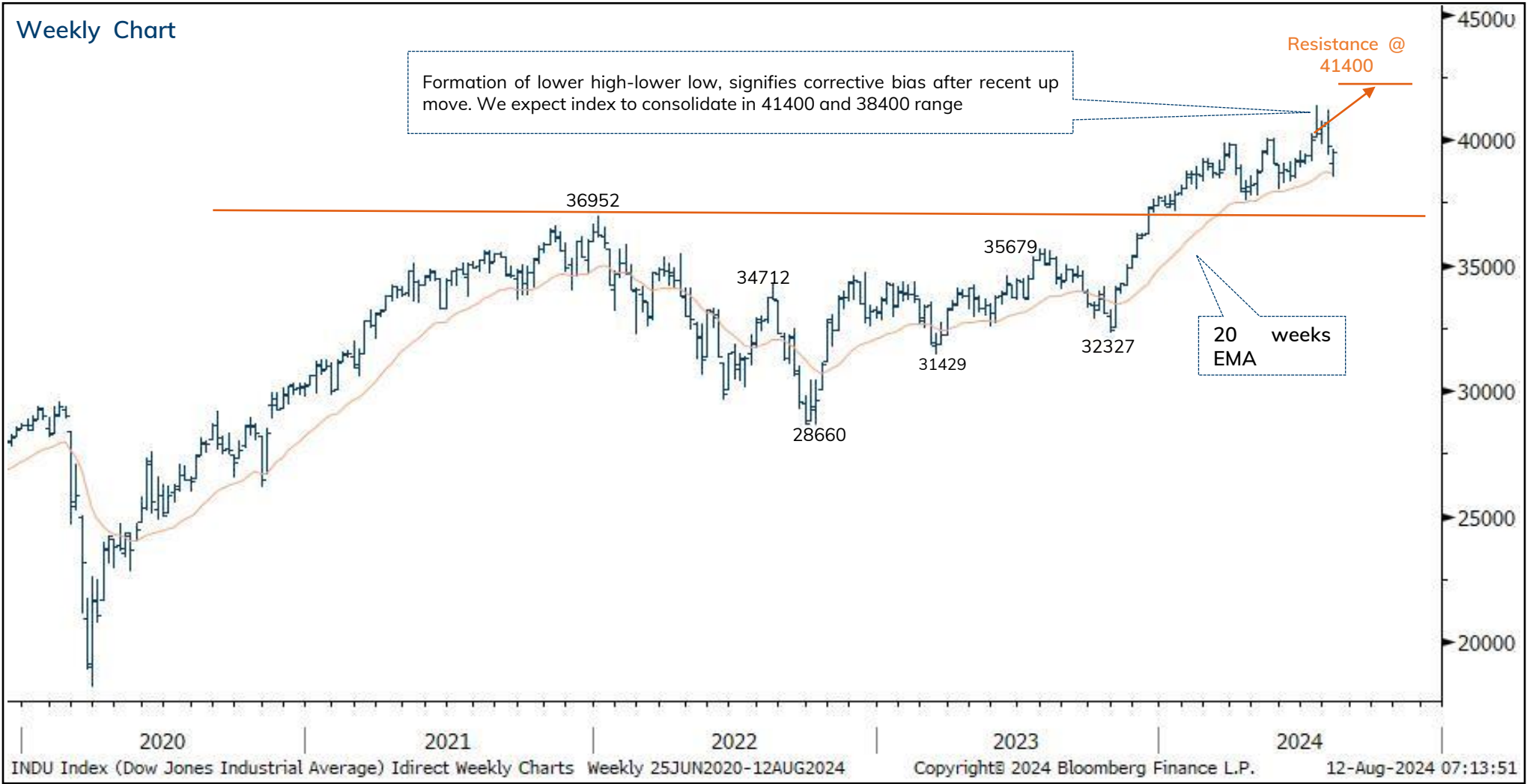


Source: Spider Software, ICICI Direct Research

August 12, 2024

ICICI Securities Ltd. | Retail Equity Research

Dow Jones (39497)



Source: Bloomberg, ICICI Direct Research

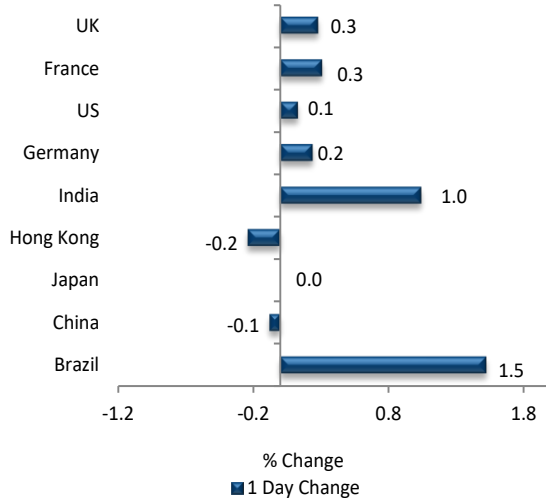
* Dow Jones chart is as on 9th August 2024

August 12, 2024

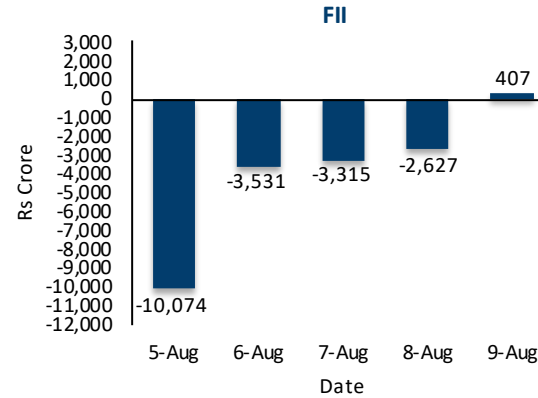
ICICI Securities Ltd. | Retail Equity Research

Market Activity Report

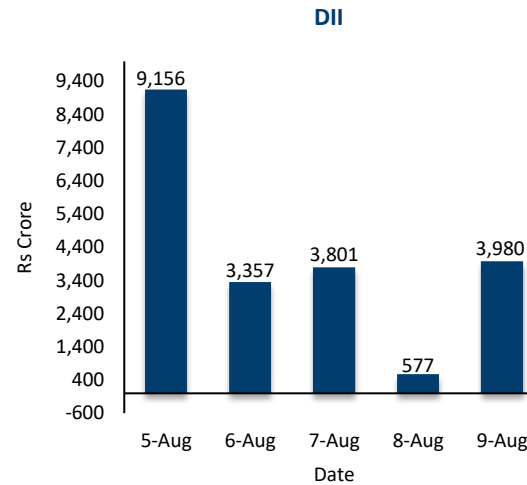
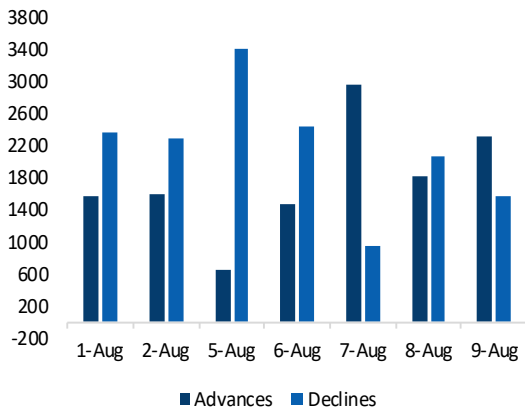
Global Equity Market Performance



Fund Flow activity of last 5 session(Provisional data)



Advance Decline



Intraday Trend, Supports and Resistance (Cash)

| Scrip Name | Trend | Close | S1 | S2 | S3 | R1 | R2 | R3 |
|----------------------|----------|----------|-------|-------|-------|-------|-------|-------|
| NIFTY 50 | Positive | 24367.5 | 24312 | 24257 | 24204 | 24421 | 24475 | 24529 |
| S&P BSE SENSEX INDEX | Positive | 79705.91 | 79508 | 79311 | 79073 | 79943 | 80181 | 80378 |
| NIFTY BANK | Positive | 50484.5 | 50344 | 50205 | 50023 | 50666 | 50847 | 50987 |
| NIFTY 50 FUTURES | Positive | 24404 | 24332 | 24260 | 24204 | 24460 | 24516 | 24587 |
| NIFTY BANK FUTURES | Positive | 50580 | 50441 | 50302 | 50125 | 50757 | 50934 | 51073 |
| AARTI INDUS LTD | Negative | 748.4 | 740 | 731 | 720 | 760 | 771 | 780 |
| ABB INDIA LTD | Positive | 7972.1 | 7840 | 7709 | 7498 | 8183 | 8395 | 8526 |
| ABBOTT INDIA LTD | Neutral | 27228.9 | 26994 | 26760 | 26388 | 27600 | 27972 | 28206 |
| ABCAPITAL | Neutral | 211.8 | 210 | 208 | 206 | 214 | 216 | 218 |
| ACC LTD | Negative | 2351.55 | 2334 | 2317 | 2293 | 2375 | 2399 | 2416 |
| ADANI ENTERPRISE | Neutral | 3187.55 | 3167 | 3145 | 3118 | 3215 | 3241 | 3263 |
| ADANI PORTS AND | Neutral | 1533.8 | 1521 | 1508 | 1496 | 1545 | 1557 | 1570 |
| ADITYA BIRLA FAS | Positive | 324.7 | 317 | 309 | 304 | 329 | 335 | 342 |
| ALKEM LABORATORI | Positive | 5796.85 | 5592 | 5388 | 5260 | 5924 | 6052 | 6256 |
| AMBUJA CEMENTS | Neutral | 632 | 627 | 621 | 611 | 642 | 651 | 657 |
| APOLLO HOSPITALS | Neutral | 6587.85 | 6546 | 6504 | 6478 | 6614 | 6640 | 6682 |
| APOLLO TYRES LTD | Negative | 491.85 | 484 | 477 | 464 | 504 | 517 | 525 |
| ASHOK LEYLAND | Positive | 253.1 | 249 | 245 | 242 | 257 | 259 | 264 |
| ASIAN PAINTS LTD | Negative | 3040.6 | 2987 | 2933 | 2901 | 3074 | 3107 | 3161 |
| ASTRAL LTD | Negative | 2031.35 | 1998 | 1965 | 1916 | 2081 | 2131 | 2164 |
| ATUL LTD | Negative | 7987.5 | 7900 | 7812 | 7712 | 8088 | 8188 | 8276 |
| AU SMALL FINANCE | Neutral | 625.95 | 620 | 615 | 607 | 633 | 641 | 646 |
| AUROBINDO PHARMA | Neutral | 1449.7 | 1424 | 1399 | 1366 | 1481 | 1513 | 1538 |
| AXIS BANK LTD | Positive | 1142.75 | 1136 | 1130 | 1121 | 1152 | 1162 | 1168 |
| BAJAJ AUTO LTD | Neutral | 9765.95 | 9661 | 9557 | 9500 | 9822 | 9879 | 9983 |
| BAJAJ FINANCE LT | Positive | 6618.2 | 6572 | 6527 | 6463 | 6681 | 6745 | 6790 |
| BAJAJ FINSERV LT | Neutral | 1560.2 | 1549 | 1539 | 1532 | 1567 | 1573 | 1584 |
| BALCHI | Neutral | 491 | 486 | 482 | 476 | 496 | 502 | 506 |
| BALKRISHNA INDS | Negative | 3058.95 | 2992 | 2926 | 2838 | 3146 | 3234 | 3301 |
| BANDHAN BANK LTD | Neutral | 199.5 | 197 | 196 | 193 | 201 | 204 | 205 |
| BANK OF BARODA | Positive | 245.85 | 242 | 238 | 234 | 250 | 254 | 258 |

Intraday Trend, Supports and Resistance (Cash)

| Scrip Name | Trend | Close | S1 | S2 | S3 | R1 | R2 | R3 |
|------------------|----------|----------|-------|-------|-------|-------|-------|-------|
| BATA INDIA LTD | Negative | 1443 | 1432 | 1420 | 1400 | 1463 | 1482 | 1495 |
| BERGER PAINTS | Positive | 531.65 | 519 | 506 | 497 | 541 | 550 | 563 |
| BHARAT ELECTRON | Positive | 302.2 | 301 | 299 | 297 | 305 | 307 | 310 |
| BHARAT FORGE CO | Negative | 1636.55 | 1617 | 1599 | 1580 | 1654 | 1673 | 1691 |
| BHARAT HEAVY ELE | Positive | 302.2 | 298 | 295 | 292 | 305 | 309 | 312 |
| BHARAT PETROL | Negative | 333.4 | 329 | 326 | 322 | 336 | 340 | 343 |
| BHARTI AIRTEL | Positive | 1464.1 | 1454 | 1443 | 1429 | 1479 | 1493 | 1503 |
| BIOCON LTD | Neutral | 336.95 | 331 | 326 | 319 | 343 | 350 | 356 |
| BIRLASOFT LTD | Negative | 577.7 | 571 | 564 | 557 | 586 | 594 | 600 |
| BOSCH LTD | Negative | 31922 | 31680 | 31439 | 31029 | 32331 | 32741 | 32982 |
| BRITANNIA INDS | Positive | 5745 | 5714 | 5684 | 5649 | 5780 | 5816 | 5846 |
| CAN FIN HOMES | Positive | 803.15 | 792 | 782 | 774 | 810 | 818 | 828 |
| CANARA BANK | Positive | 110.65 | 107 | 105 | 103 | 112 | 115 | 117 |
| CHAMBAL FERTILIS | Negative | 522.5 | 515 | 508 | 502 | 528 | 534 | 541 |
| CHOLAMANDALAM IN | Neutral | 1348.65 | 1333 | 1316 | 1295 | 1371 | 1392 | 1409 |
| CIPLA LTD | Positive | 1574.75 | 1563 | 1552 | 1543 | 1583 | 1592 | 1602 |
| CITY UNION BANK | Neutral | 163.28 | 162 | 159 | 156 | 167 | 171 | 173 |
| COAL INDIA LTD | Negative | 529.8 | 525 | 519 | 515 | 534 | 538 | 544 |
| COFORGE LTD | Positive | 5878.4 | 5815 | 5751 | 5662 | 5969 | 6059 | 6123 |
| COLGATE PALMOLIV | Neutral | 3452.4 | 3432 | 3413 | 3383 | 3480 | 3509 | 3529 |
| CONTAINER CORP | Positive | 980.8 | 965 | 949 | 929 | 1001 | 1021 | 1037 |
| COROMANDEL INTER | Neutral | 1693.7 | 1654 | 1614 | 1589 | 1719 | 1744 | 1784 |
| CROM GREAVES CON | Positive | 434.95 | 432 | 430 | 426 | 438 | 442 | 444 |
| CUMMINS INDIA | Positive | 3715.1 | 3670 | 3624 | 3547 | 3793 | 3870 | 3916 |
| DABUR INDIA LTD | Negative | 623.95 | 616 | 609 | 596 | 636 | 649 | 656 |
| DALMIA BHARAT LT | Positive | 1740.6 | 1722 | 1703 | 1669 | 1776 | 1809 | 1829 |
| DEEPAK NITRITE | Negative | 3076.35 | 3040 | 3004 | 2951 | 3129 | 3182 | 3218 |
| DIVI LABS LTD | Neutral | 4829.95 | 4795 | 4761 | 4706 | 4884 | 4939 | 4973 |
| DIXON TECHNOLOGI | Neutral | 11740.45 | 11596 | 11452 | 11350 | 11842 | 11944 | 12089 |
| DLF LTD | Positive | 830.9 | 824 | 817 | 806 | 843 | 855 | 862 |
| DR LAL PATHLABS | Positive | 3211.65 | 3185 | 3158 | 3118 | 3252 | 3292 | 3320 |

Source: Bloomberg, ICICI Direct Research
August 12, 2024

Intraday Trend, Supports and Resistance (Cash)

| Script Name | Trend | Close | S1 | S2 | S3 | R1 | R2 | R3 |
|------------------|----------|---------|------|------|------|------|------|------|
| DR REDDY'S LABS | Neutral | 7013.5 | 6977 | 6939 | 6915 | 7039 | 7063 | 7100 |
| EICHER MOTORS | Positive | 4830.6 | 4747 | 4664 | 4611 | 4883 | 4936 | 5019 |
| ESCORTS KUBOTA L | Positive | 3687.8 | 3661 | 3634 | 3597 | 3725 | 3762 | 3789 |
| EXIDE INDUS LTD | Positive | 493.2 | 486 | 479 | 471 | 502 | 509 | 517 |
| FED BANK LTD | Positive | 197.56 | 196 | 194 | 193 | 198 | 200 | 201 |
| GAIL INDIA LTD | Neutral | 227.38 | 226 | 224 | 222 | 231 | 234 | 236 |
| GLENMARK PHARMA | Positive | 1472.95 | 1456 | 1439 | 1425 | 1487 | 1501 | 1518 |
| GMR AIRPORTS INF | Positive | 99.48 | 100 | 98 | 98 | 101 | 102 | 103 |
| GNFC | Positive | 667.1 | 664 | 660 | 656 | 673 | 678 | 681 |
| GODREJ CONSUMER | Neutral | 1444.8 | 1432 | 1420 | 1398 | 1466 | 1488 | 1500 |
| GODREJ PROPERTIE | Positive | 2925.7 | 2900 | 2874 | 2837 | 2963 | 3000 | 3026 |
| GRANULES INDIA | Positive | 658.75 | 652 | 645 | 638 | 666 | 673 | 680 |
| GRASIM INDS LTD | Positive | 2572.75 | 2529 | 2485 | 2430 | 2628 | 2683 | 2727 |
| GUJARAT GAS LTD | Negative | 610.7 | 600 | 588 | 578 | 622 | 632 | 644 |
| HAVELLS INDIA | Neutral | 1799.4 | 1790 | 1782 | 1774 | 1807 | 1816 | 1824 |
| HCL TECH LTD | Positive | 1589.95 | 1576 | 1563 | 1550 | 1602 | 1615 | 1628 |
| HDFC ASSET MANAG | Positive | 4133.25 | 4101 | 4068 | 4024 | 4178 | 4222 | 4255 |
| HDFC BANK LTD | Positive | 1650.2 | 1643 | 1636 | 1627 | 1660 | 1670 | 1677 |
| HDFC LIFE INSURA | Positive | 702.4 | 697 | 692 | 683 | 711 | 720 | 724 |
| HERO MOTOCORP LT | Neutral | 5207.2 | 5183 | 5159 | 5127 | 5239 | 5271 | 5295 |
| HINDALCO INDS | Neutral | 622.9 | 616 | 609 | 604 | 627 | 633 | 639 |
| HINDUSTAN AERONA | Positive | 4723.9 | 4693 | 4662 | 4622 | 4763 | 4804 | 4834 |
| HINDUSTAN COPPER | Positive | 303.15 | 300 | 296 | 293 | 306 | 310 | 313 |
| HINDUSTAN PETRO | Negative | 376.65 | 372 | 367 | 360 | 384 | 391 | 396 |
| HINDUSTAN UNILEV | Negative | 2747.2 | 2724 | 2702 | 2685 | 2763 | 2780 | 2803 |
| IDFC | Positive | 108.28 | 107 | 106 | 105 | 109 | 110 | 111 |
| IDFC FIRST BANK | Positive | 72.86 | 72 | 72 | 71 | 74 | 74 | 75 |
| INDIA CEMENTS | Neutral | 367 | 364 | 361 | 357 | 371 | 375 | 378 |
| INDIAMART INTERM | Positive | 2777.25 | 2740 | 2703 | 2649 | 2831 | 2885 | 2921 |
| INDIAN ENERGY EX | Negative | 192.67 | 190 | 189 | 185 | 196 | 199 | 201 |
| INDIAN HOTELS CO | Positive | 618.45 | 613 | 606 | 598 | 627 | 636 | 642 |

Source: Bloomberg, ICICI Direct Research
August 12, 2024

Intraday Trend, Supports and Resistance (Cash)

| Scrip Name | Trend | Close | S1 | S2 | S3 | R1 | R2 | R3 |
|------------------|----------|---------|-------|-------|-------|-------|-------|-------|
| INDIAN OIL CORP | Neutral | 169.09 | 167 | 166 | 163 | 171 | 174 | 175 |
| INDIAN RAILWAY C | Neutral | 926.95 | 924 | 920 | 915 | 934 | 940 | 944 |
| INDRAPRASTHA GAS | Negative | 537.4 | 531 | 524 | 517 | 545 | 552 | 559 |
| INDUS TOWERS LTD | Negative | 414.95 | 412 | 409 | 404 | 420 | 425 | 428 |
| INDUSIND BANK | Positive | 1349.8 | 1337 | 1323 | 1308 | 1366 | 1381 | 1395 |
| INFO EDGE | Positive | 7214.5 | 7036 | 6857 | 6750 | 7322 | 7429 | 7608 |
| INFOSYS LTD | Positive | 1770.75 | 1757 | 1744 | 1733 | 1782 | 1794 | 1807 |
| INTERGLOBE AVIAT | Neutral | 4290.2 | 4270 | 4250 | 4226 | 4314 | 4338 | 4359 |
| IPCA LABS LTD | Positive | 1365.65 | 1353 | 1340 | 1320 | 1386 | 1406 | 1419 |
| ITC LTD | Positive | 495.9 | 494 | 491 | 489 | 499 | 501 | 504 |
| JINDAL STEEL & P | Negative | 916.2 | 907 | 899 | 884 | 930 | 945 | 954 |
| JK CEMENTS LTD | Neutral | 4245 | 4207 | 4170 | 4133 | 4281 | 4318 | 4355 |
| JSW STEEL LTD | Positive | 905.1 | 891 | 877 | 866 | 917 | 929 | 943 |
| JUBILANT FOODWOR | Neutral | 598.9 | 595 | 593 | 588 | 603 | 607 | 610 |
| KOTAK MAHINDRA | Positive | 1769.65 | 1761 | 1753 | 1740 | 1781 | 1793 | 1801 |
| L&T FINANCE LTD | Neutral | 166.2 | 165 | 164 | 162 | 168 | 170 | 172 |
| L&T TECHNOLOGY S | Positive | 4896.9 | 4835 | 4774 | 4660 | 5010 | 5124 | 5185 |
| LARSEN & TOUBRO | Neutral | 3592.05 | 3576 | 3561 | 3547 | 3606 | 3621 | 3636 |
| LAURUS LABS LTD | Negative | 426.3 | 421 | 415 | 406 | 435 | 445 | 450 |
| LIC HOUSING FIN | Neutral | 638.15 | 633 | 627 | 619 | 647 | 655 | 661 |
| LTIMINDTREE LTD | Neutral | 5373.55 | 5331 | 5290 | 5214 | 5448 | 5524 | 5566 |
| LUPIN LTD | Positive | 2113.55 | 2069 | 2023 | 1995 | 2143 | 2171 | 2217 |
| M&M FIN SERVICES | Neutral | 300.1 | 299 | 296 | 294 | 304 | 306 | 308 |
| MAHANAGAR GAS LT | Neutral | 1805.95 | 1797 | 1787 | 1771 | 1823 | 1839 | 1850 |
| MAHINDRA & MAHIN | Positive | 2749.15 | 2715 | 2680 | 2655 | 2775 | 2800 | 2835 |
| MANAPPURAM FINAN | Positive | 204.77 | 202 | 198 | 196 | 207 | 210 | 213 |
| MARICO LTD | Positive | 653 | 649 | 643 | 637 | 660 | 665 | 671 |
| MARUTI SUZUKI IN | Neutral | 12224.2 | 12150 | 12075 | 11955 | 12345 | 12465 | 12540 |
| MAX FINANCIAL SE | Positive | 1092.2 | 1076 | 1060 | 1032 | 1121 | 1148 | 1165 |
| MCX INDIA LTD | Positive | 4377.95 | 4295 | 4212 | 4143 | 4447 | 4516 | 4599 |

Intraday Trend, Supports and Resistance (Cash)

| Scrip Name | Trend | Close | S1 | S2 | S3 | R1 | R2 | R3 |
|------------------|----------|----------|--------|--------|--------|--------|--------|--------|
| METROPOLIS HEALT | Negative | 2055 | 2038 | 2020 | 1990 | 2086 | 2116 | 2134 |
| MRF LTD | Neutral | 136911.7 | 134458 | 132004 | 128608 | 140308 | 143704 | 146158 |
| MUTHOOT FINANCE | Positive | 1879.2 | 1856 | 1834 | 1820 | 1892 | 1906 | 1929 |
| SAMVARDHANA MOTH | Positive | 187.74 | 185 | 183 | 181 | 190 | 191 | 194 |
| MPHASIS LTD | Positive | 2720.5 | 2686 | 2653 | 2614 | 2759 | 2799 | 2832 |
| NATIONAL ALUMIN | Neutral | 177.25 | 174 | 171 | 168 | 179 | 181 | 184 |
| NAVIN FLUORINE I | Negative | 3550.2 | 3514 | 3477 | 3419 | 3609 | 3667 | 3704 |
| NESTLE INDIA LTD | Neutral | 2504.7 | 2492 | 2480 | 2470 | 2514 | 2524 | 2536 |
| NMDC LTD | Negative | 221.53 | 218 | 214 | 210 | 225 | 230 | 233 |
| NTPC LTD | Neutral | 410.65 | 408 | 404 | 400 | 416 | 420 | 424 |
| OBEROI REALTY | Positive | 1788.25 | 1769 | 1750 | 1730 | 1808 | 1828 | 1848 |
| OIL & NATURAL GA | Positive | 332.55 | 328 | 324 | 321 | 336 | 340 | 343 |
| ORACLE FINANCIAL | Positive | 10564.1 | 10356 | 10146 | 10029 | 10683 | 10800 | 11009 |
| PAGE INDUSTRIES | Negative | 40169 | 39520 | 38872 | 38157 | 40884 | 41599 | 42247 |
| PERSISTENT SYS | Positive | 4699.05 | 4642 | 4585 | 4535 | 4749 | 4799 | 4856 |
| PETRONET LNG LTD | Positive | 366.7 | 363 | 361 | 357 | 369 | 373 | 375 |
| PI INDUSTRIES | Positive | 4487.7 | 4436 | 4383 | 4301 | 4571 | 4653 | 4705 |
| PIDILITE INDS | Negative | 3133.15 | 3085 | 3036 | 2972 | 3198 | 3262 | 3311 |
| PIRAMAL ENTERPRI | Neutral | 969 | 953 | 937 | 925 | 981 | 993 | 1009 |
| POLYCAB INDIA LT | Neutral | 6650.7 | 6596 | 6541 | 6474 | 6718 | 6785 | 6840 |
| POWER FINANCE | Positive | 500.65 | 495 | 488 | 481 | 509 | 516 | 523 |
| POWER GRID CORP | Neutral | 346 | 343 | 341 | 338 | 348 | 351 | 352 |
| PUNJAB NATL BANK | Positive | 115.27 | 114 | 112 | 111 | 116 | 118 | 119 |
| PVR INOX LTD | Positive | 1501.2 | 1477 | 1453 | 1439 | 1515 | 1529 | 1553 |
| RAMCO CEMENT/THE | Neutral | 799.75 | 795 | 791 | 786 | 805 | 810 | 814 |
| RBL BANK LTD | Positive | 216.85 | 215 | 214 | 211 | 218 | 221 | 222 |
| REC LTD | Neutral | 586.9 | 585 | 581 | 576 | 593 | 597 | 601 |
| RELIANCE INDS | Positive | 2948.6 | 2923 | 2897 | 2882 | 2964 | 2979 | 3005 |
| SBI CARDS & PAYM | Positive | 709.8 | 704 | 700 | 691 | 718 | 726 | 731 |
| SBI LIFE INSURAN | Positive | 1725.1 | 1711 | 1697 | 1685 | 1736 | 1747 | 1761 |
| SHREE CEMENT | Negative | 24296.6 | 23907 | 23516 | 23182 | 24632 | 24966 | 25357 |

Intraday Trend, Supports and Resistance (Cash)

| Scrip Name | Trend | Close | S1 | S2 | S3 | R1 | R2 | R3 |
|------------------|----------|----------|-------|-------|-------|-------|-------|-------|
| SHRIRAM FINANCE | Positive | 2958.1 | 2901 | 2844 | 2807 | 2994 | 3030 | 3087 |
| SIEMENS LTD | Positive | 6889.5 | 6803 | 6715 | 6659 | 6947 | 7003 | 7091 |
| SRF LTD | Neutral | 2553.65 | 2528 | 2502 | 2466 | 2590 | 2626 | 2652 |
| STATE BANK IND | Positive | 824.3 | 812 | 801 | 792 | 832 | 841 | 853 |
| STEEL AUTHORITY | Negative | 129.35 | 127 | 124 | 119 | 135 | 140 | 143 |
| SUN PHARMA INDU | Positive | 1735.3 | 1726 | 1718 | 1706 | 1746 | 1758 | 1766 |
| SUN TV NETWORK | Positive | 916.85 | 893 | 870 | 856 | 930 | 944 | 967 |
| SYNGENE INTERNAT | Negative | 834.1 | 801 | 768 | 743 | 860 | 884 | 918 |
| TATA CHEMICALS | Positive | 1041.7 | 1032 | 1024 | 1012 | 1052 | 1064 | 1072 |
| TATA COMM | Positive | 1887.5 | 1866 | 1843 | 1823 | 1909 | 1929 | 1952 |
| TATA CONSULTANCY | Positive | 4228.75 | 4204 | 4181 | 4156 | 4252 | 4277 | 4301 |
| TATA CONSUMER PR | Neutral | 1186.15 | 1181 | 1176 | 1172 | 1190 | 1194 | 1199 |
| TATA MOTORS LTD | Positive | 1068.1 | 1053 | 1037 | 1022 | 1084 | 1099 | 1115 |
| TATA POWER CO | Negative | 417.75 | 415 | 411 | 406 | 424 | 429 | 433 |
| TATA STEEL LTD | Neutral | 151.81 | 151 | 150 | 149 | 153 | 154 | 155 |
| TECH MAHINDRA LT | Positive | 1506.7 | 1489 | 1470 | 1460 | 1517 | 1528 | 1546 |
| TITAN CO LTD | Neutral | 3331.7 | 3294 | 3257 | 3229 | 3359 | 3387 | 3424 |
| TORRENT PHARMA | Negative | 3338.4 | 3304 | 3270 | 3241 | 3368 | 3398 | 3432 |
| TRENT LTD | Positive | 6275.35 | 5810 | 5345 | 5063 | 6557 | 6839 | 7305 |
| TVS MOTOR CO LTD | Neutral | 2581.45 | 2546 | 2512 | 2491 | 2602 | 2624 | 2658 |
| ULTRATECH CEMENT | Neutral | 11300.35 | 11205 | 11109 | 10987 | 11423 | 11545 | 11641 |
| UNITED BREWERIES | Negative | 1945.45 | 1925 | 1903 | 1884 | 1965 | 1984 | 2006 |
| UNITED SPIRITS | Neutral | 1454.95 | 1440 | 1426 | 1405 | 1474 | 1494 | 1508 |
| UPL LTD | Positive | 554.6 | 550 | 545 | 539 | 561 | 567 | 573 |
| VEDANTA LTD | Positive | 428.85 | 424 | 419 | 415 | 432 | 437 | 441 |
| VODAFONE IDEA LT | Positive | 16.1 | 16 | 16 | 15 | 16 | 16 | 16 |
| VOLTAS LTD | Negative | 1428.85 | 1416 | 1405 | 1391 | 1441 | 1455 | 1467 |
| WIPRO LTD | Positive | 491.3 | 488 | 485 | 481 | 494 | 499 | 501 |
| ZEE ENTERTAINMEN | Neutral | 137.53 | 136 | 135 | 134 | 139 | 141 | 141 |
| ZYDUS LIFESCIENC | Positive | 1300.9 | 1282 | 1262 | 1240 | 1323 | 1344 | 1364 |

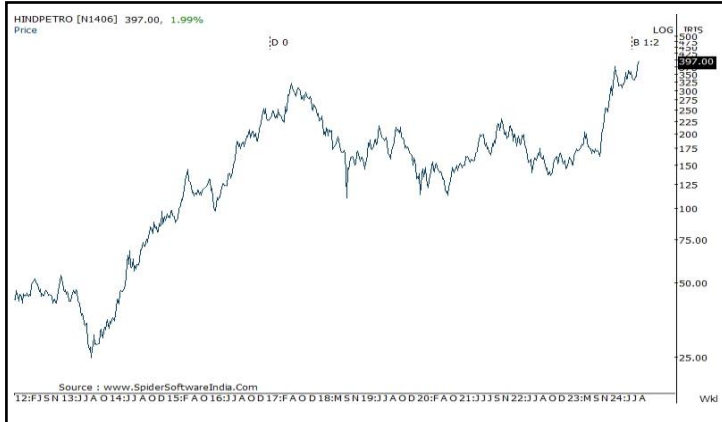
| Date | Scrip Name | CMP | Strategy | Recommendations Price | Target | Stoploss | Time Frame |
|-----------|---------------------|-------|----------|-----------------------|--------|----------|------------|
| 31-Jul-24 | GAIL | 228 | Buy | 236-244 | 278 | 224 | 3 Months |
| 30-Jul-24 | JSW Energy | 706.5 | Buy | 690-705 | 798 | 648 | 3 Months |
| 15-Jul-24 | Bank of Maharashtra | 62 | Buy | 66-68.50 | 78 | 62 | 3 Months |

All the recommendations are in Cash segment

[Back to Top](#)

Price history of last three years

HPCL



- In case of intraday stock recommendations, execute the trade within +/- 0.25% of the recommended range provided in the report. The stock recommendation has to be executed after the first 5 minutes of trade and only up to 11:00 am. In case of Nifty future execute after the first 5 minutes of trade and up to 03:00 pm
- In case of positional recommendations, execute the recommendations in the range provided in the report
- Once the recommendation is executed, it is advisable to maintain strict stop loss as provided in the report. For positional recommendation maintain stop loss on daily closing basis
- We adopt a trading strategy of booking 50% profit when the position is in profit by 4-5% and trail stop loss on remaining position to the entry point (In case of positional stock recommendations)
- In case of intra day Nifty futures recommendation, once recommendation is activated, consider booking 50% profit near 1st Target (tolerance of 3 points) and trail stop loss to cost for remaining positions
- If the recommended intra day stock hits the target price before getting activated, then it is considered not initiated
- The Intra day recommendations are valid only for the day and should be squared off by 15:10 hrs. The positional recommendations are valid only for the prescribed period and are to be squared off at the end of mentioned period unless communicated otherwise through separate mail or on i-click to gain page
- Only stocks in derivatives segment have been considered for intra day recommendations
- Medium to long-term prospects of a stock does not have any bearing on the intra day view

Trading portfolio allocation

- It is recommended to spread out the trading corpus in a proportionate manner between the various technical research products
- Please avoid allocating the entire trading corpus to a single stock or a single product segment
- Within each product segment it is advisable to allocate equal amount to each recommendation
- For example: The 'Momentum Pick' product carries 2 to 4 intraday recommendations. It is advisable to allocate equal amount to each recommendation

Recommended product wise portfolio allocation

| Product | Allocations | | Number of Calls | Return Objective | Duration |
|----------------------------|-------------------------|---------------------------|-------------------|------------------|----------|
| | Product wise allocation | Max allocation In 1 Stock | | | |
| Momentum Picks- Intraday | 10% | 30-50% | 2 Stocks | 1-2% | Intraday |
| Momentum Picks- Positional | 25% | 8-10% | 8-10 Per Month | 5-8% | 14 Days |
| Gladiator Stocks | 35% | 10-13% | Opportunity Based | 15-20% | 6 Months |
| Yearly Technical | 25% | 12-15% | 7-9 Per Year | 20-30% | 1 Year |
| Cash | 5% | | | | |
| <hr/> | | | | | |
| | 100% | | | | |

Candlestick patterns describe the market sentiment for the specified period. Some of the formations suggest reversal of sentiment (trend) and, therefore, are important for a chart reader. By themselves, the patterns do not carry any price target but only an indication of change in market behaviour. More importance needs to be given to the placement of the pattern within larger trend

Morning Star: Potential bottom reversal pattern made of three candle lines. The first sizeable black candle reflects a market in which the bears are in complete charge. The next candle line--the small real body--shows a slight diminution of the bearish force. The white candle that makes up the last part of the morning star visually displays the bulls are gaining the upper hand. Lowest low amongst three candles becomes technical support

Bullish Engulfing Line: A potential bottom reversal pattern. This pattern typically appears at the culmination of a decline or downtrend. The market falls, and a black candle forms (ideally a small black candle). Next, a white real body wraps around the prior session's black body. Low of the pattern becomes short term support for prices

Piercing Line: Potential bottom reversal pattern. A black body forms in the downtrend. The market continues moving south on the next session's open but that session culminates in a white real body that closes (e.g. pierces) than half way or more into the prior black body. Lowest low between two candles is referred to as technical support for prices

Hammer: A candlestick line which, during a downtrend, has a very long lower shadow and small real body (black or white) at the top end of the session's range. There should be no, or a very small, upper shadow. Pattern suggests buying support during declines and needs confirmation in terms of sustainability of prices above head of the Hammer in following session

Evening Star: Potential Top reversal pattern made of three candle lines. Comparable with a traffic signal. First white candle reflects a market in bullish trend. The next candle line--the small real body--warns waning momentum. The black candle that completes the evening star visually exhibits that prior up trend has stopped or reversed

Bearish Engulfing Line: Potential top reversal signal. This two candlestick pattern emerges during a rally. A black candle real body wraps around a white real body (classically a small white candle) Highest high between two candles becomes resistance level for prices for future reference

Dark Cloud cover: A dark cloud cover forms a top reversal pattern. The first session should be a strong, white real body. The second session's price opens over the prior session's high (or above the prior session's close). By the end of the second session, it closes near the low of the session and should fall well into the prior session's white body. Pattern suggests that market has a poor chance of rising immediately

Shooting Star: A single candlestick line during a rally in which there is a small real body (white or black) at the bottom end of the session's range and a very long upper shadow. The candle line should also have little or no lower shadow. Pattern suggest the trouble for prices overhead

Continuation Patterns: Other than widely known Candlestick reversal patterns discussed above, there are numerous patterns mentioned in literature on Candlestick which describe the continuation of existing sentiments i.e. bullish or bearish. We have refrained from mentioning names of these patterns to avoid confusion. However, the remark Continuation Pattern refers to bullish or bearish candlestick patterns which suggest continuation of existing trend



Pankaj Pandey

Head – Research

pankaj.pandey@icicisecurities.com

ICICI Direct Research Desk,
ICICI Securities Limited,
Third Floor, Brillanto House,
Road No 13, MIDC,
Andheri (East)
Mumbai – 400 093
research@icicidirect.com

We/I, Dharmesh Shah, Nitin Kunte, Ninad Tamhanekar, Vinayak Parmar, Research Analysts, authors and the names subscribed to this report, hereby certify that all of the views expressed in this research report accurately reflect our views about the subject issuer(s) or securities. We also certify that no part of our compensation was, is, or will be directly or indirectly related to the specific recommendation(s) or view(s) in this report. Analysts are not registered as research analysts by FINRA and are not associated persons of the ICICI Securities Inc. It is also confirmed that above mentioned Analysts of this report have not received any compensation from the companies mentioned in the report in the preceding twelve months and do not serve as an officer, director or employee of the companies mentioned in the report.

Terms & conditions and other disclosures:

ICICI Securities Limited (ICICI Securities) is a full-service, integrated investment banking and is, inter alia, engaged in the business of stock broking and distribution of financial products.

ICICI Securities is Sebi registered stock broker, merchant banker, investment adviser, portfolio manager and Research Analyst. ICICI Securities is registered with Insurance Regulatory Development Authority of India Limited (IRDAI) as a composite corporate agent and with PFRDA as a Point of Presence. ICICI Securities Limited Research Analyst SEBI Registration Number – INH000000990. ICICI Securities Limited SEBI Registration is INZ000183631 for stock broker. Registered Office Address: ICICI Venture House, Appasaheb Marathe Marg, Prabhadevi, Mumbai - 400 025. CIN: L67120MH1995PLC086241, Tel: (91 22) 6807 7100. ICICI Securities is a subsidiary of ICICI Bank which is India's largest private sector bank and has its various subsidiaries engaged in businesses of housing finance, asset management, life insurance, general insurance, venture capital fund management, etc. ("associates"), the details in respect of which are available on www.icicibank.com. Investments in securities market are subject to market risks. Read all the related documents carefully before investing.

Registration granted by Sebi and certification from NISM in no way guarantee performance of the intermediary or provide any assurance of returns to investors. None of the research recommendations promise or guarantee any assured, minimum or risk-free return to the investors.

Name of the Compliance officer (Research Analyst): Mr. Atul Agrawal

Contact number: 022-40701000 E-mail Address: complianceofficer@icicisecurities.com

For any queries or grievances: Mr. Bhavesh Soni Email address: headservicequality@icicidirect.com Contact Number: 18601231122

Recommendation in reports based on technical and derivative analysis centre on studying charts of a stock's price movement, outstanding positions, trading volume etc as opposed to focusing on a company's fundamentals and, as such, may not match with the recommendation in fundamental reports. Investors may visit icicidirect.com to view the Fundamental and Technical Research Reports. Our proprietary trading and investment businesses may make investment decisions that are inconsistent with the recommendations expressed herein.

ICICI Securities Limited has two independent equity research groups: Institutional Research and Retail Research. This report has been prepared by the Retail Research. The views and opinions expressed in this document may or may not match or may be contrary with the views, estimates, rating, target price of the Institutional Research.

The information and opinions in this report have been prepared by ICICI Securities and are subject to change without any notice. The report and information contained herein is strictly confidential and meant solely for the selected recipient and may not be altered in any way, transmitted to, copied or distributed, in part or in whole, to any other person or to the media or reproduced in any form, without prior written consent of ICICI Securities. While we would endeavour to update the information herein on a reasonable basis, ICICI Securities is under no obligation to update or keep the information current. Also, there may be regulatory, compliance or other reasons that may prevent ICICI Securities from doing so. Non-rated securities indicate that rating on a particular security has been suspended temporarily and such suspension is in compliance with applicable regulations and/or ICICI Securities policies, in circumstances where ICICI Securities might be acting in an advisory capacity to this company, or in certain other circumstances.

This report is based on information obtained from public sources and sources believed to be reliable, but no independent verification has been made nor is its accuracy or completeness guaranteed. This report and information herein is solely for informational purpose and shall not be used or considered as an offer document or solicitation of offer to buy or sell or subscribe for securities or other financial instruments. Though disseminated to all the customers simultaneously, not all customers may receive this report at the same time. ICICI Securities will not treat recipients as customers by virtue of their receiving this report. Nothing in this report constitutes investment, legal, accounting and tax advice or a representation that any investment or strategy is suitable or appropriate to your specific circumstances. The securities discussed and opinions expressed in this report may not be suitable for all investors, who must make their own investment decisions, based on their own investment objectives, financial positions and needs of specific recipient. This may not be taken in substitution for the exercise of independent judgment by any recipient. The recipient should independently evaluate the investment risks. The value and return on investment may vary because of changes in interest rates, foreign exchange rates or any other reason. ICICI Securities accepts no liabilities whatsoever for any loss or damage of any kind arising out of the use of this report. Past performance is not necessarily a guide to future performance. Investors are advised to see Risk Disclosure Document to understand the risks associated before investing in the securities markets. Actual results may differ materially from those set forth in projections. Forward-looking statements are not predictions and may be subject to change without notice.

ICICI Securities or its associates might have managed or co-managed public offering of securities for the subject company or might have been mandated by the subject company for any other assignment in the past twelve months.

ICICI Securities or its associates might have received any compensation from the companies mentioned in the report during the period preceding twelve months from the date of this report for services in respect of managing or co-managing public offerings, corporate finance, investment banking or merchant banking, brokerage services or other advisory service in a merger or specific transaction.

ICICI Securities or its associates might have received any compensation for products or services other than investment banking or merchant banking or brokerage services from the companies mentioned in the report in the past twelve months.

ICICI Securities encourages independence in research report preparation and strives to minimize conflict in preparation of research report. ICICI Securities or its associates or its analysts did not receive any compensation or other benefits from the companies mentioned in the report or third party in connection with preparation of the research report. Accordingly, neither ICICI Securities nor Research Analysts and their relatives have any material conflict of interest at the time of publication of this report.

Compensation of our Research Analysts is not based on any specific merchant banking, investment banking or brokerage service transactions. ICICI Securities or its subsidiaries collectively or Research Analysts or their relatives do not own 1% or more of the equity securities of the Company mentioned in the report as of the last day of the month preceding the publication of the research report.

Since associates of ICICI Securities and ICICI Securities as an entity are engaged in various financial service businesses, they might have financial interests or actual/ beneficial ownership of one percent or more or other material conflict of interest various companies including the subject company/companies mentioned in this report.

ICICI Securities may have issued other reports that are inconsistent with and reach different conclusion from the information presented in this report. Neither the Research Analysts nor ICICI Securities have been engaged in market making activity for the companies mentioned in the report.

We submit that no material disciplinary action has been taken on ICICI Securities by any Regulatory Authority impacting Equity Research Analysis activities.

This report is not directed or intended for distribution to, or use by, any person or entity who is a citizen or resident of or located in any locality, state, country or other jurisdiction, where such distribution, publication, availability or use would be contrary to law, regulation or which would subject ICICI Securities and affiliates to any registration or licensing requirement within such jurisdiction. The securities described herein may or may not be eligible for sale in all jurisdictions or to certain category of investors. Persons in whose possession this document may come are required to inform themselves of and to observe such restriction.